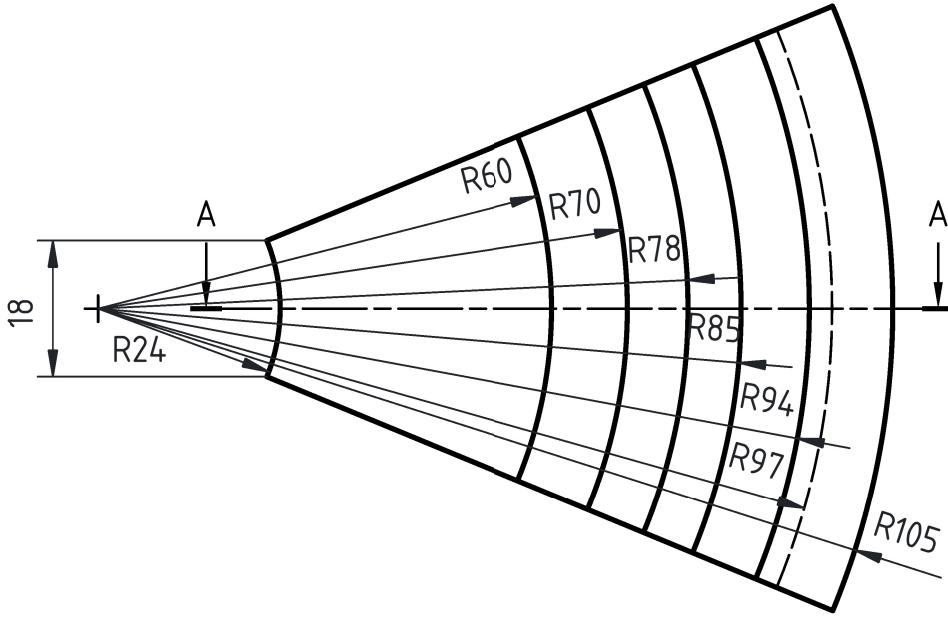
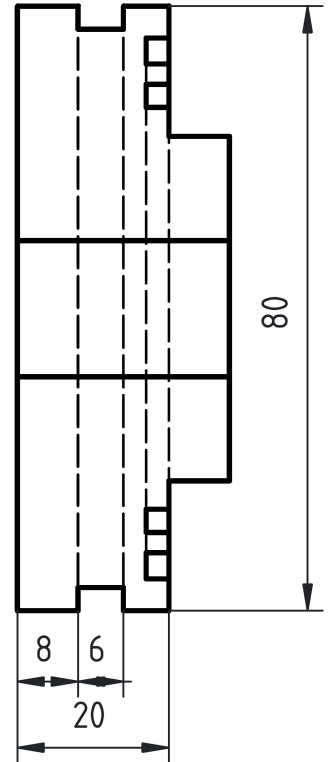


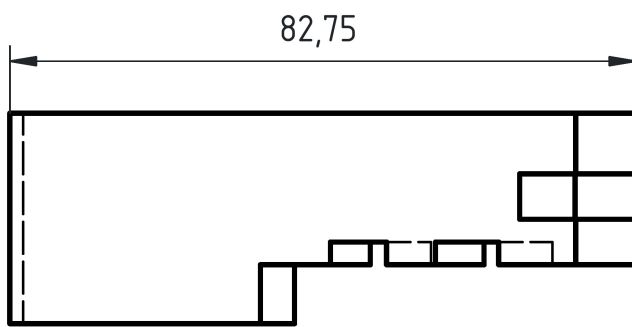
*Vue de face*



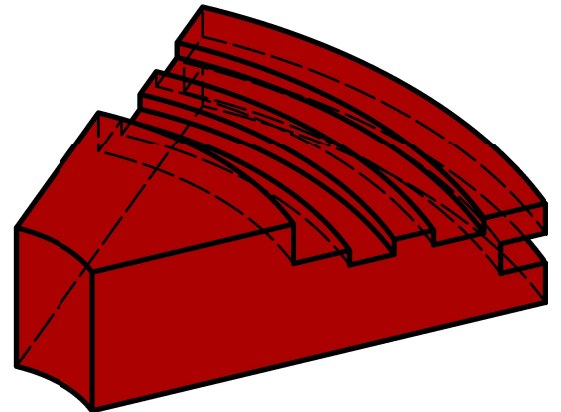
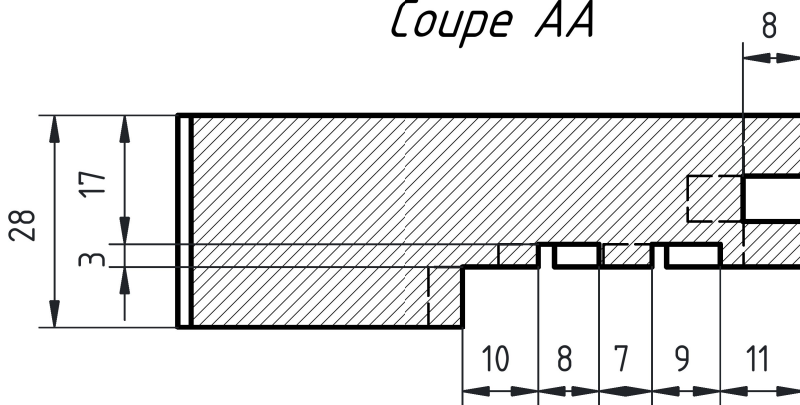
*Vue de gauche*

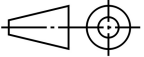


*Vue de dessus*



*Coupe AA*



1	Mors Frammax	A.50	82.75 x 80 x 28	1	Masse : 0.657 Kg
Rep.	Désignation	Matière	Dimensions	Nbr.	Observations
Conçu par Wills	Vérfié par Wills	Approuvé par H.B		Date 09-05-2026	Ech : 1/1
<b>By Wills Conception</b>		Titre : Mors Frammax			
			Modification	Feuille 1/1	